

Technical Data Sheet

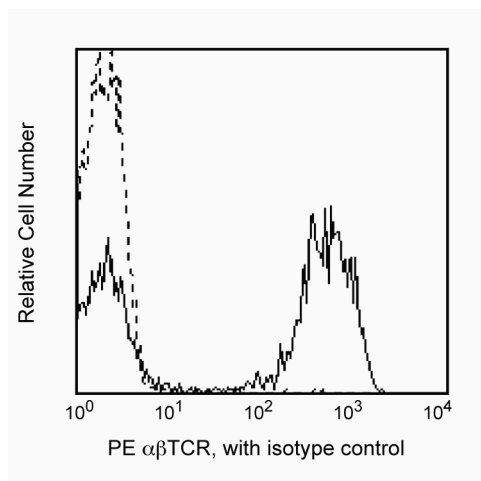
PE Mouse Anti-Human TCR $\alpha\beta$

Product Information

Material Number:	561674
Size:	25 tests
Vol. per Test:	20 μ l
Clone:	T10B9.1A-31
Isotype:	Mouse IgM, κ
Reactivity:	QC Testing: Human
Workshop:	V 5T-TCR.01
Storage Buffer:	Aqueous buffered solution containing BSA and $\leq 0.09\%$ sodium azide.

Description

This antibody reacts with a monomorphic determinant of $\alpha\beta$ T-cell receptor expressed on greater than 95% of normal peripheral blood CD3+ T cells. The $\alpha\beta$ TCR recognizes a peptide bound to MHC leading to T-cell activation. The T10B9.1A-31 antibody induces T-cell activation in the immobilized form and is useful in flow cytometry for studying $\alpha\beta$ + T-cell populations.



Profile of peripheral blood lymphocytes analyzed by flow cytometry

Preparation and Storage

Store undiluted at 4°C.

The monoclonal antibody was purified from tissue culture supernatant or ascites by affinity chromatography.

The antibody was conjugated with R-PE under optimum conditions, and unconjugated antibody and free PE were removed.

Application Notes

Application

Flow cytometry	Routinely Tested
----------------	------------------

Suggested Companion Products

Catalog Number	Name	Size	Clone
555584	PE Mouse IgM, κ Isotype Control	100 tests	G155-228

Product Notices

1. This reagent has been pre-diluted for use at the recommended Volume per Test. We typically use 1×10^6 cells in a 100- μ l experimental sample (a test).
2. Please refer to www.bdbiosciences.com/pharmingen/protocols for technical protocols.
3. For fluorochrome spectra and suitable instrument settings, please refer to our Fluorochrome Web Page at www.bdbiosciences.com/colors.
4. Caution: Sodium azide yields highly toxic hydrazoic acid under acidic conditions. Dilute azide compounds in running water before discarding to avoid accumulation of potentially explosive deposits in plumbing.
5. Source of all serum proteins is from USDA inspected abattoirs located in the United States.
6. An isotype control should be used at the same concentration as the antibody of interest.

BD Biosciences

bdbiosciences.com

United States	Canada	Europe	Japan	Asia Pacific	Latin America/Caribbean
877.232.8995	888.268.5430	32.53.720.550	0120.8555.90	65.6861.0633	0800.771.7157

For country-specific contact information, visit bdbiosciences.com/how_to_order/

Conditions: The information disclosed herein is not to be construed as a recommendation to use the above product in violation of any patents. BD Biosciences will not be held responsible for patent infringement or other violations that may occur with the use of our products. Purchase does not include or carry any right to resell or transfer this product either as a stand-alone product or as a component of another product. Any use of this product other than the permitted use without the express written authorization of Becton Dickinson and Company is strictly prohibited.

For Research Use Only. Not for use in diagnostic or therapeutic procedures. Not for resale.

BD, BD Logo and all other trademarks are the property of Becton, Dickinson and Company. ©2011 BD



References

Schlossman SF, Boumsell L, Gilks W, et al, ed. *Leukocyte Typing V: White Cell Differentiation Antigens*. New York: Oxford University Press; 1995. (Clone-specific)