

**APC anti-mouse CD3ε**

**Catalog # / Size:** 1101560 / 100 µg  
1101555 / 25 µg

**Clone:** 145-2C11

**Isotype:** Hamster IgG

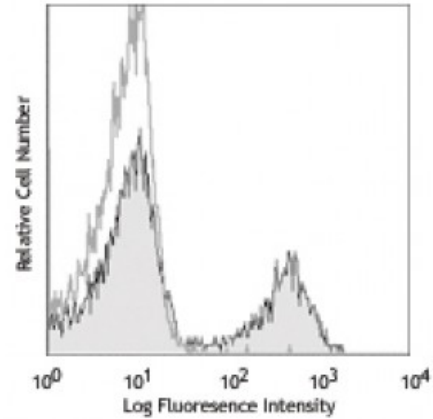
**Immunogen:** H-2Kb-specific mouse cytotoxic T lymphocyte clone BM10-37

**Reactivity:** Mouse

**Preparation:** The antibody was purified by affinity chromatography, and conjugated with APC under optimal conditions. The solution is free of unconjugated APC and unconjugated antibody.

**Formulation:** Phosphate-buffered solution, pH 7.2, containing 0.09% sodium azide.

**Concentration:** 0.2



C57BL/6 mouse splenocytes were stained with CD3ε (clone 145-2C11) APC (filled histogram) or Armenian hamster IgG APC isotype control (open histogram).

**Applications:**

**Applications:** Flow Cytometry

**Recommended Usage:** Each lot of this antibody is quality control tested by immunofluorescent staining with flow cytometric analysis. For flow cytometric staining, the suggested use of this reagent is ≤1.0 microg per million cells in 100 microL volume. It is recommended that the reagent be titrated for optimal performance for each application.

**Application Notes:** Clone 145-2C11 is useful for *in vitro* blocking of target-specific CTL-mediated cell lysis<sup>1</sup>, as well as T cell activation assays, inducing proliferation and cytokine production<sup>1,2,7,12,16</sup>. It also induces apoptosis in immature thymocytes<sup>32</sup>, and *in vivo* T cell depletion<sup>8-10</sup>. Additional reported applications (for relevant formats of this clone) include: immunoprecipitation<sup>1</sup>, immunohistochemical staining<sup>14,15</sup> of acetone-fixed frozen sections and zinc-fixed paraffin-embedded sections, Western blotting<sup>4</sup>, complement-mediated cytotoxicity<sup>6</sup>, *in vitro* and *in vivo* stimulation of T cells<sup>1,2,7,12,16</sup>, immunofluorescent staining<sup>5</sup>, and *in vivo* T cell depletion<sup>8-10</sup>. The 145-2C11 antibody has been reported to block the binding of 17A2 antibody to CD3 epsilon-specific T cells<sup>11</sup>. Clone 145-2C11 is not recommended for formalin-fixed paraffin embedded sections. The LEAF™ purified antibody (Endotoxin <0.1 EU/µg, Azide-Free, 0.2 µm filtered) is recommended for functional assays (Cat. No. 100314). For *in vivo* studies or highly sensitive assays, we recommend Ultra-LEAF™ purified antibody (Cat. No. 100340) with a lower endotoxin limit than standard LEAF™ purified antibodies (Endotoxin <0.01 EU/microg).

- Application References:**
1. Leo O, *et al.* 1987. *P. Natl. Acad. Sci. USA* 84:1374. (IP, Activ)
  2. Kruisbeek AM, *et al.* 1991. *In Current Protocols in Immunology*. 3.12.1. (Activ)
  3. Duke RC, *et al.* 1995. *Current Protocols in Immunology*. 3.17.1.
  4. Salvadori S, *et al.* 1994. *J. Immunol.* 153:5176. (WB)
  5. Payer E, *et al.* 1991. *J. Immunol.* 146:2536. (IF)
  6. Jacobs H, *et al.* 1994. *Eur. J. Immunol.* 24:934. (CMCD)
  7. Vossen ACTM, *et al.* 1995. *Eur. J. Immunol.* 25:1492. (Activ)
  8. Henrickson M, *et al.* 1995. *Transplantation* 60:828. (Deplete)
  9. Kinnaert P, *et al.* 1996. *Transpl. Int.* 9:386. (Deplete)

10. Han WR, *et al.* 1999. *Transpl. Immunol.* 7:207. (Deplete)
  11. Miescher GC, *et al.* 1989. *Immunol. Lett.* 23:113. (Block)
  12. Terrazas LI, *et al.* 2005. *Intl. J. Parasitology.* 35:1349. (Activ)
  13. Ko SY, *et al.* 2005. *J. Immunol.* 175:3309.
  14. Podd BS, *et al.* 2006. *J. Immunol.* 176:6532. (IHC)
  15. Tilley SL, *et al.* 2007. *J. Immunol.* 178:3208. (IHC)
  16. Wang W, *et al.* 2007. *J. Immunol.* 178:4885. (Activ)
  17. Xiao S, *et al.* 2007. *J. Exp. Med.* 204:1691.
  18. Chappaz S, *et al.* 2007. *Blood* doi:10.1182/blood-2007-02-074245. (FC)  
[PubMed](#).
  19. Curtsinger JM, *et al.* 2005. *J. Immunol.* 175:4392. [PubMed](#)
  20. Guo Y, *et al.* 2008. *Blood* 112:480. [PubMed](#)
  21. Kenna TJ, *et al.* 2008. *Blood* 111:2091.
  22. Perchonock CE, *et al.* 2007. *J. Immunol.* 179:1768. [PubMed](#)
  23. Perchonock GE, *et al.* 2006. *Mol. Cell. Biol.* 26:6005. [PubMed](#)
  24. Kanaya T, *et al.* 2008. *Am. J. Physiol. Gastrointest. Liver Physiol.* 295:G273.  
[PubMed](#)
  25. de Koning BA, *et al.* 2006. *Int. Immunol.* 18:941. [PubMed](#)
  26. Schulteis RD, *et al.* 2008. *Blood* 295:G273. [PubMed](#)
  27. Qi Q, *et al.* 2009. *Blood* 114:564. [PubMed](#)
  28. Helmersson S, *et al.* 2013. *Am J Pathol.* 9440:123. [PubMed](#)
  29. Wu S, *et al.* 2014. *Clin Vaccine Immunol.* 21:156. [PubMed](#)
  30. Yan J, *et al.* 2014. *Vaccine.* 32:2833. [PubMed](#)
  31. Guterrez DA, *et al.* 2014. *Diabetes.* 63:3827. [PubMed](#)
  32. Wan W, *et al.* 2015. *Cardiovasc Res.* 106:478. [PubMed](#)
- 

**Description:** CD3 $\epsilon$  is a 20 kD transmembrane protein, also known as CD3 or T3. It is a member of the Ig superfamily and primarily expressed on T cells, NK-T cells, and at different levels on thymocytes during T cell differentiation. CD3 $\epsilon$  forms a TCR complex by associating with the CD3 $\delta$ ,  $\gamma$  and  $\zeta$  chains, as well as the TCR  $\alpha/\beta$  or  $\gamma/\delta$  chains. CD3 plays a critical role in TCR signal transduction, T cell activation, and antigen recognition by binding the peptide/MHC antigen complex.

- Antigen**
- References:**
1. Barclay A, *et al.* 1997. *The Leukocyte Antigen FactsBook* Academic Press.
  2. Davis MM. 1990. *Annu. Rev. Biochem.* 59:475.
  3. Weiss A, *et al.* 1994. *Cell* 76:263.