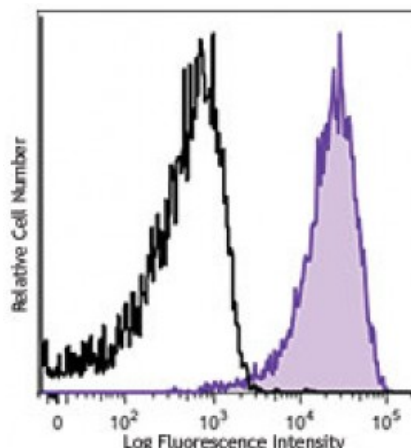


Brilliant Violet 421™ anti-human CD107a (LAMP-1)

Catalog # / Size:	2243130 / 100 tests 2243125 / 25 tests
Clone:	H4A3
Isotype:	Mouse IgG1, κ
Immunogen:	Human adult adherent peripheral blood cells
Reactivity:	Human
Preparation:	The antibody was purified by affinity chromatography and conjugated with Brilliant Violet 421™ under optimal conditions. The solution is free of unconjugated Brilliant Violet 421™ and unconjugated antibody.
Formulation:	Phosphate-buffered solution, pH 7.2, containing 0.09% sodium azide and BSA (origin USA).
Workshop Number:	P PR-63; BP 473; P P008
Concentration:	Lot-specific



Thrombin-activated human peripheral blood platelets were stained with CD107a (clone H4A3) Brilliant Violet 421™ (filled histogram) or mouse IgG1, κ Brilliant Violet 421™ isotype control (open histogram).

Applications:

Applications:	Immunofluorescence
Recommended Usage:	Each lot of this antibody is quality control tested by immunofluorescent staining with flow cytometric analysis. For flow cytometric staining, the suggested use of this reagent is ≤ 5 microL per million cells or 5 microL per 100 microL of whole blood. It is recommended that the reagent be titrated for optimal performance for each application.

Brilliant Violet 421™ excites at 405 nm and emits at 421 nm. The standard bandpass filter 450/50 nm is recommended for detection. Brilliant Violet 421™ is a trademark of Sirigen Group Ltd.

This product is subject to proprietary rights of Sirigen Inc. and is made and sold under license from Sirigen Inc. The purchase of this product conveys to the buyer a non-transferable right to use the purchased product for research purposes only. This product may not be resold or incorporated in any manner into another product for resale. Any use for therapeutics or diagnostics is strictly prohibited. This product is covered by U.S. Patent(s), pending patent applications and foreign equivalents.

Application Notes:	Additional reported applications (for the relevant formats) include: Western blotting ⁸ , immunohistochemical staining ² , immunofluorescence ^{5,7} , and immunoprecipitation ⁵ .
---------------------------	---

Application References:	<ol style="list-style-type: none"> 1. Misse D, <i>et al.</i> 1999. <i>Blood</i> 93:2454. 2. Furuta K, <i>et al.</i> 2001. <i>Am. J. Pathol.</i> 159:449. (IHC) 3. Watanabe A, <i>et al.</i> 2011. <i>J. Biol. Chem.</i> 286:10702. PubMed 4. Baron Gaillard CL, <i>et al.</i> 2011. <i>Mol. Cell. Biol.</i> 22:5459. PubMed 5. Hauck CR and Meyer TF. 1997. <i>FEBS Lett.</i> 405:86. (IF, IP) 6. De Keersmaecker B, <i>et al.</i> 2012. <i>J. Virol.</i> 86:9351. PubMed 7. Knodler LA, <i>et al.</i> 2010. <i>P. Natl. Acad. Sci. USA.</i> 107:17733. (IF)
--------------------------------	---

8. Oh J, *et al.* 2000. *Hum. Mol. Genet.* 9:375. (WB)
9. Salio M, *et al.* 2013 *PNAS.* 110:4753. [PubMed](#)
-

Description: CD107a, also known as Lysosome-Associated Membrane Protein 1 (LAMP-1) or LGP-120, is a 110-140 kD type I membrane glycoprotein. Mature CD107a is heavily glycosylated from a 40 kD core protein. This molecule is located on the luminal side of lysosomes. Upon activation, CD107a is transferred to the cell membrane surface of activated platelets, activated lymphocytes, macrophages, epithelial cells, endothelial cells, and some tumor cells. CD107a has been suggested to play a role in the protection of lysosomal membrane from lysosomal hydrolases which is involved in cell adhesion and regulation of tumor metastasis, and mediates autoimmune disease progression. CD107a is a ligand for galactin and E-selectin. Surface expression of LAMP-1 has been shown to correlate with CD8⁺ T cell and NK cell cytotoxicity.

Antigen
References:

1. Sarafian V, *et al.* 2006. *Arch. Dermatol. Res.* 298:7381.
2. Schlossman SF, *et al.* 1995. *Leukocyte Typing V: White Cell Differentiation Antigens*. New York: Oxford University Press.
3. Sawada R, *et al.*