

PE anti-human CD213α2 (IL13Rα2)

Catalog # / Size: 2372020 / 100 tests
2372015 / 25 tests

Clone: SHM38

Isotype: Mouse IgG1, κ

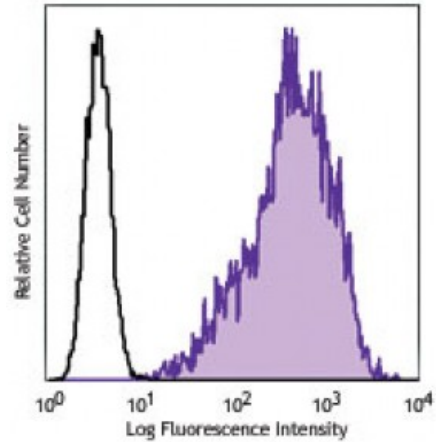
Immunogen: Melanoma cell line A375

Reactivity: Human

Preparation: The antibody was purified by affinity chromatography and conjugated with PE under optimal conditions. The solution is free of unconjugated PE and unconjugated antibody.

Formulation: Phosphate-buffered solution, pH 7.2, containing 0.09% sodium azide and 0.2% (w/v) BSA (origin USA).

Concentration: Lot-specific



Human melanoma cell line, A375, was stained with CD213a2 (clone SHM38) PE (filled histogram) or mouse IgG1, κ PE isotype control (open histogram).

Applications:

Applications: Flow Cytometry

Recommended Usage: Each lot of this antibody is quality control tested by immunofluorescent staining with flow cytometric analysis. For flow cytometric staining, the suggested use of this reagent is 5 microL per million cells or 5 microL per 100 microL of whole blood. It is recommended that the reagent be titrated for optimal performance for each application.

Application References: 1. Takenouchi M, *et al.* 2011. *Clin. Cancer Res.* 17:2819. (FC)

Description: CD213a2, also known as IL-13Rα2, is a type I transmembrane protein and member of the hematopoietin family. IL13Rα2 is the high affinity receptor for IL-13, but it possibly acts as a decoy receptor to antagonize IL-13Rα1/IL-4Ra-mediated IL-13 biological functions. IL13Rα2 is expressed by fibroblasts, smooth muscle cells, keratinocytes and activated B cells. However, its presence on the cell surface is highly regulated. CD213a2 is also expressed in various types of cancer which makes it an attractive therapeutic target.

Antigen References: 1. Mitchell J, *et al.* 2010. *Curr. Opin. Investig Drugs.* 11:527.
2. Strober W, *et al.* 2009. *Curr. Mol. Med.* 9:740.
3. Tabata Y, *et al.* 2007. *Curr. Allergy Asthma Rep.* 7:338.