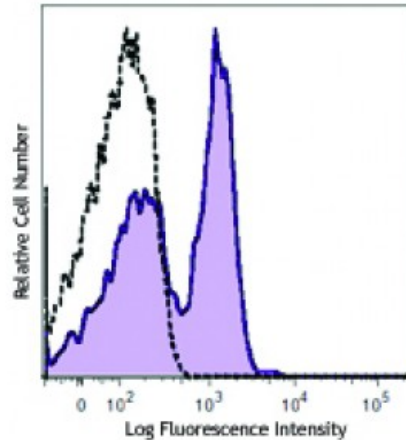


PE anti-human CD130 (gp130)

Catalog # / Size:	2410020 / 100 tests 2410015 / 25 tests
Clone:	2E1B02
Isotype:	Mouse IgG2a, κ
Immunogen:	GP130 (23-619aa) recombinant protein
Reactivity:	Human
Preparation:	The antibody was purified by affinity chromatography and conjugated with PE under optimal conditions. The solution is free of unconjugated PE and unconjugated antibody.
Formulation:	Phosphate-buffered solution, pH 7.2, containing 0.09% sodium azide and 0.2% (w/v) BSA (origin USA).
Concentration:	Lot-specific



Human peripheral blood lymphocytes were stained with CD130 (clone 2E1B02) PE (filled histogram) or mouse IgG2a, κ PE isotype control (open histogram).

Applications:

Applications:	Flow Cytometry
Recommended Usage:	Each lot of this antibody is quality control tested by immunofluorescent staining with flow cytometric analysis. For flow cytometric staining, the suggested use of this reagent is 5 microL per million cells or 5 microL per 100 microL of whole blood. It is recommended that the reagent be titrated for optimal performance for each application.

Description: CD130, also known as gp130 (glycoprotein 130), IL6ST (IL-6-receptor-associated signal transducer), or common β chain, is a member of the hemopoietic cytokine receptor family. CD130 is a common subunit associated with the receptors for several cytokines, such as IL-6, IL-11, Oncostatin M (OSM), CNTF (ciliary neurotrophic factor), CT-1, Neuropoietin (NP), and IL-27. CD130 participates in the JAK-STAT signaling pathway and is expressed on T cells, activated B cells, monocytes, plasma cells, and endothelial or epithelial cells.

- Antigen References:**
1. Arzt E, *et al.* 2001. *J. Clin. Invest.* 108:1729.
 2. Bravo J, *et al.* 2000. *EMBO J.* 19:2399.
 3. Wang XJ, *et al.* 1998. *Blood* 91:3308.
 4. Hibi. M, *et al.* 1990. *Cell.*