

PE anti-human CD215 (IL-15R α)

Catalog # / Size: 2251035 / 25 tests
2251040 / 100 tests

Clone: JM7A4

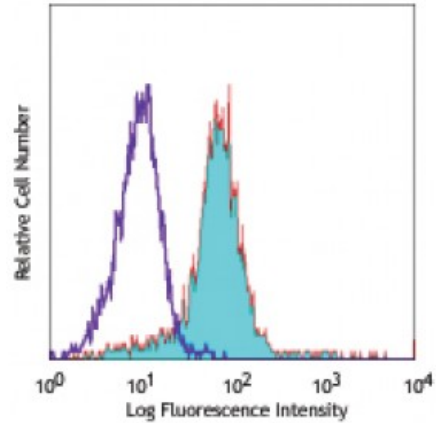
Isotype: Mouse IgG2b, κ

Reactivity: Human

Preparation: The antibody was purified by affinity chromatography, and conjugated with PE under optimal conditions. The solution is free of unconjugated PE and unconjugated antibody.

Formulation: Phosphate-buffered solution, pH 7.2, containing 0.09% sodium azide and 0.2% (w/v) BSA (origin USA).

Concentration: Lot-specific



IFN- γ + LPS-stimulated human peripheral blood monocytes stained with JM7A4 PE.

Applications:

Applications: Flow Cytometry

Recommended Usage: Each lot of this antibody is quality control tested by immunofluorescent staining with flow cytometric analysis. **Test size products are transitioning from 20 microL to 5 microL per test.** Please check your vial or your CoA to find the suggested use of this reagent per million cells in 100 microL staining volume or per 100 microL of whole blood. It is recommended that the reagent be titrated for optimal performance for each application.

Application References:

1. Vamosi G, *et al.* 2004. *P. Natl. Acad. Sci. USA.* 101:11082.
2. Dubois S, *et al.* 2002. *Immunity* 17:537.
3. Veerman KM, *et al.* 2012. *J. Immunol.* 188:1638. (FC) [PubMed](#)
4. Vujanovic L, *et al.* 2010. *Blood.* 116:575. (FC) [PubMed](#)
5. Kitaya K, *et al.* 2013. *Biol. Reprod.* 89:70. (FC) [PubMed](#)
6. Marra P, *et al.* 2014. *Cancer Res.* 74:4908. [PubMed](#)

Description: IL-15 receptor α (IL-15R α) is a cytokine receptor with the structural homology to IL-2R α (CD25). Both α receptors contain a group of β sandwich protein called sushi domains. Similar to IL-2R α , IL-15R α is able to form a heterotrimer with their β chain (CD122) and common γ chain (γ c, CD132). But unlike IL-2R α subunit, IL-15R α itself binds to IL-15 with equivalent high affinity compared with the heterotrimeric complex. IL-15R α is expressed as soluble or transmembrane forms by variety cells, such as activated monocytes, dendritic cells, CD8⁺ memory T cells, NK or NKT cells. IL-15R α by itself forms stable complexes with IL-15 on cell surface and presents IL-15 in trans to neighboring cells. IL-15, like IL-2, is a pleiotropic four-helix bundle cytokine and plays a key role in promoting T and B cell survival and proliferation, preferentially in memory CD8⁺ T cell proliferation, and NK/NKT cell development.

Antigen References:

1. Giri JG, *et al.* 1995. *EMBO J.* 14:3654.
2. Giron-Michel J, *et al.* 2005. *Blood* 106:2302.
3. Lorenzen I, *et al.* 2005. *J. Biol. Chem.* 281:6642.
4. Sato N, *et al.* 2007. *Proc. N*